

PERÇEMİN SEVDÂSI HER ŞEB KIYL Ü KÂLİMDİR BENİM

BESTE : ŞENTÜRK DEVECİ
GÜFTE : ŞEYH GÂLİB

DÂ SI HER

YE LE LEL LEL LE LE LE LE LE LE LE LI YAR TE RE LEL LE LE LE LE

LE LI YAR YE LE LEL LE LEL LE LE LEL LE LE LEL LE LI YAR

FAHTE

BAH

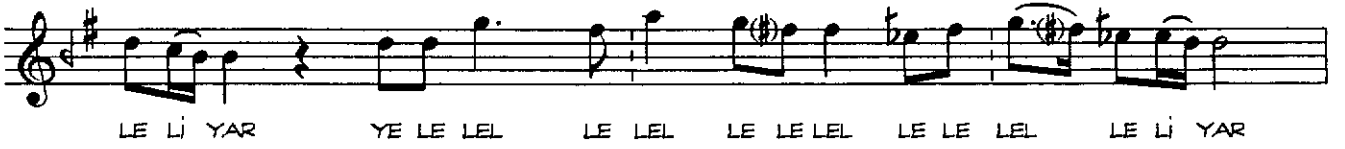
Si

The first line of musical notation is on a single staff with a treble clef and a key signature of one sharp (F#). The melody begins with a quarter rest, followed by a series of eighth and sixteenth notes. A slur covers a triplet of eighth notes marked with a '3' and a sharp sign. The line concludes with a quarter note and a final double bar line. The lyrics 'ZÜL FÜN ÇOK' are written below the staff, aligned with the notes.

SAZKÂR BESTE



DEVİR-İ KEBİR



YÜRÜK SEMÂİ



DEVİR-İ KEBİR



SAZKÂR BESTE

LE Lİ YAR YE LE LEL LE LEL LE LE LEL LE LE LEL LE Lİ YAR

Mİ RİM TE RE LEL LE LEL LE Lİ YAR DOST

DOST AŞK HÂ LİM DİR BE NİM

FAHTE

HAN Gİ

Â ŞIK TIR

SÊ NİN GÖN LÜN

DE GÖN LÜN KİM DE DİR

DEVİR-İ KEBİR

YE LE LEL LEL LE LE LE LE LE LE LE Lİ YAR TE RE LEL LE LE LE LE

LE Lİ YAR YE LE LEL LE LEL LE LE LEL LE LE LEL LE Lİ YAR

Mİ RİM TE RE LEL LE LE LE Lİ YAR DOST

DOST AŞK HÂ LİM DİR BE NİM (SON)

PERÇEMİN SEVDASI HER ŞEB KYL-Ü KÂLİMDİR BENİM
BAHSİ ZÜLFÜN ÇOK ZAMANLARDIR HAYÂLİMDİR BENİM
SORMAK AYBOLMAZSA SULTÂNİM SUÂLİMDİR BENİM
HANGİ ÂŞIKTIR SENİN GÖNLÜNDE GÖNLÜN KİMDİR

Beste tarihi : 03-Aralık-1993
ANKARA- Şentürk DEVECİ